



Sacramento P.I.T.S. presents

# The Battle Born Trial June 4<sup>th</sup> & 5<sup>th</sup>

Prison Hill Recreation Area, Carson City, NV

Organized by the Schnurbusch, Taylor, and Kennedy Families

## Saturday Family Trial

### Motorcycle

#### Classes:

Twin Shock  
Modern Bike  
Junior  
Trail Bike Class

#### Entry fee:

PITS Member:  
Gray Card \$35  
Blue Card \$25  
Red Card \$20  
Orange Card \$15  
One Day Membership  
for Non-Members  
\$15 (includes family)  
Land use fee \$5 per  
rider

#### Classes:

Exhibition  
Intermediate  
Sportsman-  
Intermediate  
Sportsman  
Amateur  
Novice

#### Saturday Schedule

Sign ups: 11:00-12:00  
Riders Meeting: 12:00  
Trial Starts: 12:15

## Sunday Class A Trial

#### Classes:

Master  
Expert  
Advanced A & B  
Intermediate A & B  
Sportsman Int. A & B  
Sportsman A & B  
Vintage Sportsman  
Open

#### Entry fee:

PITS Member  
Gray Card \$40  
Blue Card \$30  
Red Card \$25  
Orange Card \$20  
One Day Membership  
for Non-Members \$15  
(includes family)  
Land use fee \$5 per  
rider

#### Sunday Schedule

Sign ups: 9:00-10:00  
Riders Meeting: 10:00  
Trial Starts: 10:15

## Small Wheels Championship Trial (FREE)

Saturday June 4<sup>th</sup> 10:00-11:00am

Guaranteed: Easy – Open – Level-Spectator Friendly Loop

Sections will remain marked all weekend for kids to ride

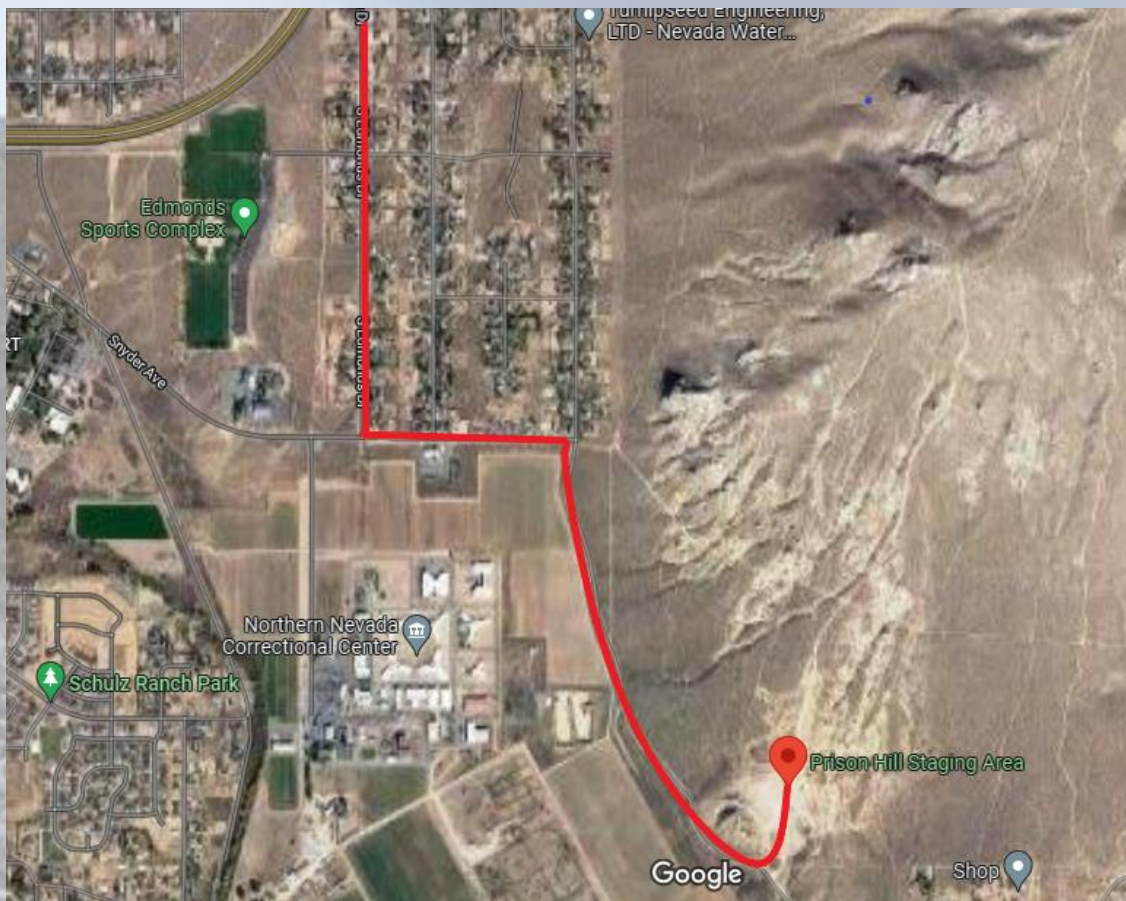
Info: Mike Lange 530.414.0458

## Dry Camping Friday and Saturday - \$11 per night

**LEAVE NO TRACE**– Please pack out what you pack in. This is the first time we are being allowed to have an event here and we want to be able to do it again next year. Thank you

Staying on the loop is MANDATORY! Don't crush the brush! Riding on shrubs or bushes in or out of section is prohibited. Practice in open areas only (see posted map).

Spark arrestors, OHV stickers, and AMA approved helmets are required!

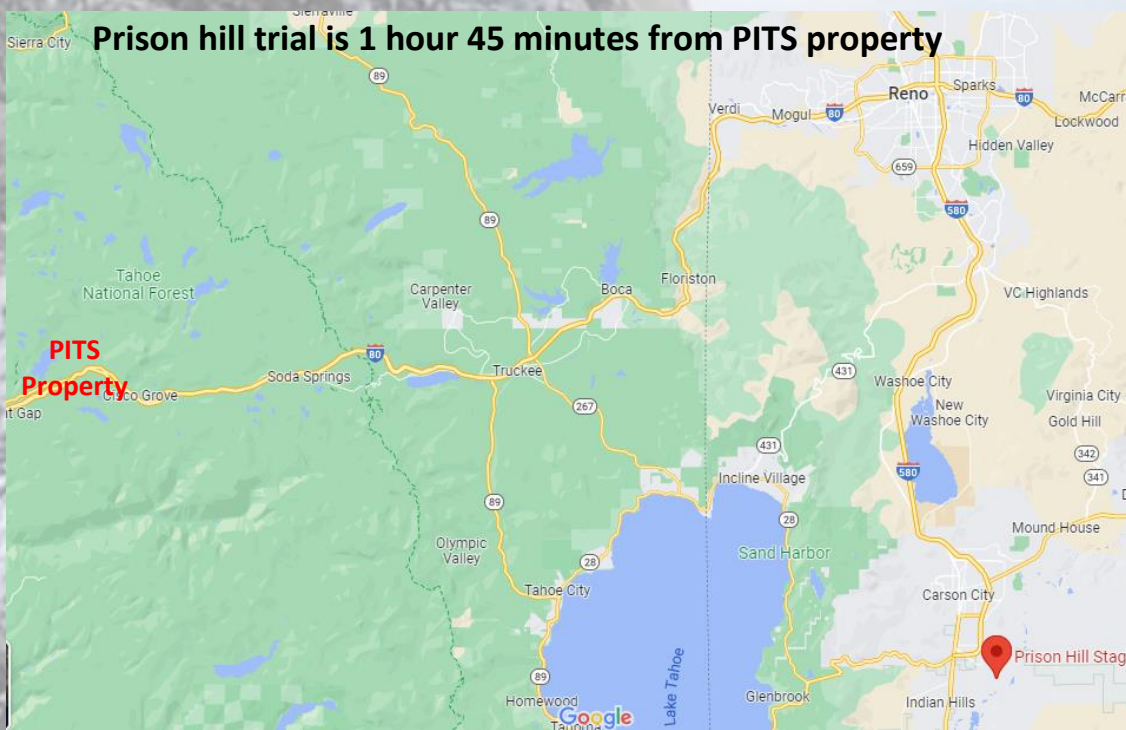


**Prison Hill Staging Area**

**39° 6' 0.5724" N  
119° 43' 33.6" W**

**The GPS coordinates will take you right to the staging area. However a Google Maps search will take you to the trail head instead of the staging area.**

**From I-580 take Fairview Dr exit, turn east. Then turn right on S Edmonds Dr and follow it for 2.7 miles. Then turn left on Snyder and after 0.4 miles turn right on Golden Eagle Lane. Follow Golden Eagle Lane for 0.9 miles and turn left at Prison Hill Staging area sign.**



**Prison hill trial is 1 hour 45 minutes from PITS property**